



# The Circle's Noteworthy News

Winter Quarter

January 2010

## Special points of interest:

- **Member Spotlight—Bahama Joe's** (see page 2)
- **Announcements** (see page 2)

## Inside this issue:

Member Spotlight	2
Credit Union Calendar	2
IRA's	3
Mortgage Information	3
Credit Union Rates	3
Services	4
Board of Directors	4

## WCCU to Celebrate 60 Years

Please mark your calendars for this year's Workmen's Circle Credit Union (WCCU) annual meeting. WCCU will be celebrating 60 years as a State Chartered Credit Union. It is the perfect opportunity to ask questions and share comments about the credit union. You have the opportunity to meet the Board of Directors and management staff who are responsible for leading the credit union throughout the year. You will get to meet and visit with other fellow credit union members as well. The meeting will be held, **Thursday, February 18, 2010**. A reception will be held at 5:30 p.m., followed by a short business meeting at 6:00 p.m. At the conclusion of the meeting, a light meal will be served. The event will be held at The Jewish Educational Alliance at 5111 Abercorn Street. All members are invited to attend and we look forward to seeing you there!

## Need to Save? Direct Deposit Your Tax Refund in 2010!

If you are one of the millions of taxpayers eligible for a tax refund this year, did you know you can direct deposit the refund into your credit union account? This is the quickest, safest and easiest method of obtaining your refund. Here's why:

◆ **It's Faster** – According to the IRS, direct deposit of your return will enable the IRS to deposit your refund up to 3 weeks earlier than if you were to receive it by conventional mail. Therefore, the money goes directly into your account and the credit union records the receipt immediately. This allows for your tax refund to be put to work earn-

ing dividends right away.

◆ **It's Safer** – There is no check to get lost or stolen.

◆ **It's Easier** – There is no need to make a special trip to the credit union to deposit your check. It is especially beneficial if you are going to be away from home when the check is expected to arrive.

Take advantage of this convenient way to deposit your refund. Call a credit union representative today to discover how it's done (912) 356-9225.

Assets as of November 30, 2009  
\$35,832,373.00

# Member Spotlight

Member Spotlight

Is it time to order your company shirts or promotional products again? Well look no further than fellow Credit Union member, Bahama Joe's, for all your promotional needs from t-shirts to corporate casual to key chains, they have it all.

In 1977, at the age of 18, Angel Garcia, owner of Bahama Joe's, left his job in Tampa, Florida where he worked in a cigar factory, and moved to Savannah, Georgia. Angel knew he worked well with his hands and found himself perusing the pages of a Silkscreen book in Friedman's Art Store upon arriving in the low country. After purchasing the book, he sold his van to buy screen printing equipment and the rest is history. In 1977 Bahama Joe's opened up shop. The company has grown over the years and is now approximately 26 employees strong. In 2001, Angel was joined at the helm by partners Ed Chapman and Ross Mosteller. They ensure their company sells quality products at affordable prices and maintains outstanding customer service.

Bahama Joe's helps you to brand your company and make your mark. For over 32 years, they have offered the latest in corporate apparel, custom screen printing, embroidery and advertising specialty items to countless customers around the world. For more information on Bahama Joe's products or services you may visit [bahamajoes.com](http://bahamajoes.com) or call (912) 233-0060.

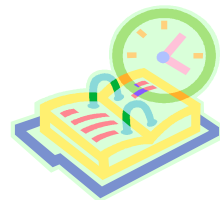


## Announcements

**\*You are cordially invited to attend the Workmen's Circle Credit Union Annual Meeting. Thursday, February 18, 2010 at 5:30 p.m.  
The Jewish Educational Alliance  
5111 Abercorn Street  
Savannah, Georgia 31405**

**To Do:**

**\*Do not forget to retain your year end statement for tax purposes.**



**Credit Union  
Holidays**

New Year's Day  
January 1, 2010

President's Day  
February 15, 2010

## IRA: *The sooner, The better*

If you have been thinking about establishing an Individual Retirement Account (IRA) for the tax year 2009, or making a contribution to your existing account, make sure you make that contribution by the IRS's cut off date of April 15, 2010.

Depending on your tax situation, you may be eligible for a federal income tax deduction if you contribute to a traditional IRA. It is possible you could claim at least a partial tax break for 2009, depending on your adjusted gross income and whether you have a retirement savings plan at work. The maximum contribution is generally \$5,000 per person, but if you are age 50 or older, you may make an additional "catch-up" contribution of \$1000 - a total of \$6,000.

Or consider contributing to a Roth IRA. Although you don't get an immediate tax break, your money grows on a tax-free basis. When you withdraw from a Roth IRA, none of it will be taxed - as long as you follow the Roth IRA rules.

You can contribute to both types of IRAs, as long as you don't exceed the overall contribution limit. Consider this if you are only eligible for a partial tax break on your traditional IRA: Contribute to the traditional IRA up to the limit - then invest the balance in your Roth.

To determine which IRA plan is the best for you, call or stop by the credit union and speak with Donna Smith, our certified IRA specialist (912) 356-9225.

For specific tax questions, please contact your tax advisor directly.

**Mortgage  
Rates are  
Low, Low,  
Low!**

- **Fixed rate mortgage's up to 30 years**
- **Apply Online**  
[workmenscirclecu.com](http://workmenscirclecu.com)
- **Quick turn around time**
- **Free application process**

**Call Chris Miltiades or  
Jessica Neeley  
at (912) 356-9225  
Today!**

## Credit Union Rates for the 2nd Quarter 2009

<b>Regular Share Savings Account</b>	<b>APR</b>	<b>APY</b>
<b>with balance between \$50.00-\$2,499.99</b>	<b>0.75%</b>	<b>0.75%</b>
<b>with balance above \$2,500.00</b>	<b>1.49%</b>	<b>1.50%</b>
<b>Regular IRA Account</b>	<b>APR</b>	<b>APY</b>
<b>with balance between \$50.00-\$2,499.99</b>	<b>1.25%</b>	<b>1.26%</b>
<b>with balance above \$2500.00</b>	<b>1.74%</b>	<b>1.75%</b>
<b>Share/IRA Money Market</b>	<b>APR</b>	<b>APY</b>
<b>with balance between \$20,000.00-49,999.99</b>	<b>2.33%</b>	<b>2.35%</b>
<b>with balance between \$50,000.00-99,999.99</b>	<b>2.57%</b>	<b>2.60%</b>
<b>with balance between \$100,000.00-499,999.99</b>	<b>2.72%</b>	<b>2.75%</b>
<b>with balance between \$500,000.00-999,999.99</b>	<b>2.96%</b>	<b>3.00%</b>
<b>with balance above \$999,999.99</b>	<b>3.21%</b>	<b>3.26%</b>

WCCU account rates are adjusted monthly based on current market conditions. APR stands for Annual Percentage Rate and APY stands for Annual Percentage Yield. APR's and APY's are accurate as of 12/31/2009 and are subject to change at any time and without notice. Offers available for business, personal and IRA accounts. Accounts are insured by the NCUA, a federal government agency up to \$250,000 on share savings and up to \$250,000 on IRA accounts. Please note that money market accounts with balances of \$19,999.99 and below earn 0.50% APR. The minimum share savings account balance to be a member of Workmen's Circle Credit Union is \$50.00.

## Services

*Share Savings  
Traditional IRA  
Roth IRA*

*Coverdell Education Savings (ESA)*

*Share Money Market  
IRA Money Market*

*6, 12, 15, 24 Month  
Share or IRA Certificate (CD)*

*Electronic Funds Transfer  
Payroll Deduction  
Internet Branching*

*First Mortgage Loans  
Home Equity Lines of Credit  
Business Loans  
New/Used Vehicle Loans  
Signature Loans  
Share Secured Loans  
and more...*



## **Workmen's Circle Credit Union**

527 Stephenson Ave, Suite 2  
Savannah, GA 31405-5922

P: (912) 356-9225

F: (912) 356-9226

info@workmenscirclecu.com

---

Monday through Friday  
8:30 a.m. to 4:30 p.m.

---

### Management Team

Chris A. Miltiades, President  
Donna A. Smith, Asst. Secretary  
Jessica M. Neeley, Member Services

---

### Board of Directors

Leon Aronson, D.D.S., Chairman  
Fred E. Rabhan, D. P.M., Secretary  
Norton Melaver  
Frank Hoffman, M.D.  
Harold B. Yellin  
Stephen F. Greenberg  
Lloyd Goodman, M.D.  
Paul J. Kulbersh, D.M.D.  
Jodi Sadler  
Robert M. Bono  
Chris A. Miltiades

## **Questions or**

## **Comments?**



If you have a question or comment about Workmen's Circle Credit Union, this newsletter or the products or services we offer,

please contact us at (912) 356-9225. You may email us at [info@workmenscirclecu.com](mailto:info@workmenscirclecu.com) or visit us on the web at [www.workmenscirclecu.com](http://www.workmenscirclecu.com). Please remember, as a member you own a part of the credit union. Your thoughts and suggestions are an important part of what has made Workmen's Circle Credit Union a success.

